

DSJ1 Single Channel DSC Docking Station

TYPE: DSJ1

Features

- Bus connections for communication and power supply
- Removable field wireable terminals
- D type 9 pin connector for easy communications connection
- Green LED power indicator
- Red LED digital output indicator
- Push switch to simulate digital input
- Option to terminate bus through 120 ohm resistor
- CAN compliant
- 3 x screen clamps for EMC termination

Typical Applications

- Vessel Weighing
- Cable tension measurement
- Conveyor weighing
- Force transfer standard interface

Description

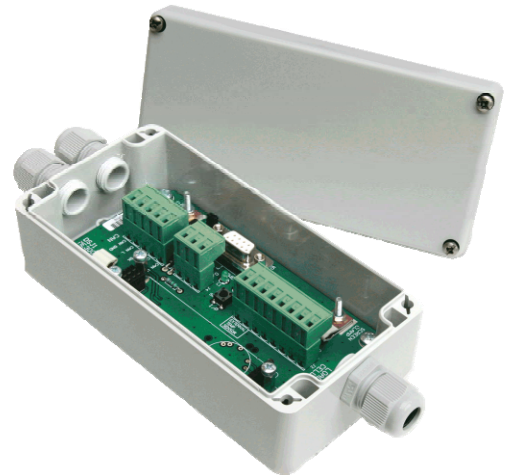
The function of the DSJ1 is to enable the easy connection of a load cell and a DSC Card for communications to a PC or PLC.

Designed to take one DSC Card in a single enclosure, the DSJ1 offers a convenient and practical solution to the installation of digital load cells with platforms, silos and other weighing systems where connection to PC and PLC's is required.

Supplied as an OEM device on a single 135 x 73mm PCB, it has options for fitting in an IP65 ABS Case, or to a DIN rail fixture.

When a DSC card is fitted to the DSJ1 PCB it will enable the connection of a load cell via a two-part connector, with a five-way two-part connector for the communications output or D type 9 pin connector, as well as connections for digital inputs and outputs and external temperature sensor.

The communications output connection is RS232, RS485 or CAN depending on the DSC unit used.



Specification

Connections	1 x 8 way 2 part terminal for load cell and temperature sensor connections (2.5mm ² cable max) 1 x 5 way 2 part terminal for Digital Data and Power (2.5mm ² cable max) 1 x 3 way 2 part terminal for DSC digital I/O 1 x 9 way D type connector for digital data
Dimensions	135 x 73 x 18mm PCB only
Enclosure Material	Sealed to IP65 with cable entries via IP67 glands (when supplied with option of enclosure)
Options	Supply of ABS enclosure On board temperature sensor Mounting alternatives: DIN rail option

CE & Environmental

Storage temperature	-40 to +85°C
Operating temperature	-40 to +8°C
Relative humidity	95% maximum non condensing
European EMC Directive	2004/108/EC
Low Voltage Directive	2006/95/EC

Connection/ConfigurationDetails

Link Description

LK1 & LK5	Select connections to D Type, RS232 or CAN/RS485
LK2	Provides 120R terminating Resistor for CAN/RS485
LK3	Selects on board temperature sensor or external device connected to J2
LK5	Connects digital output to Output LED

J1 Connector Detail

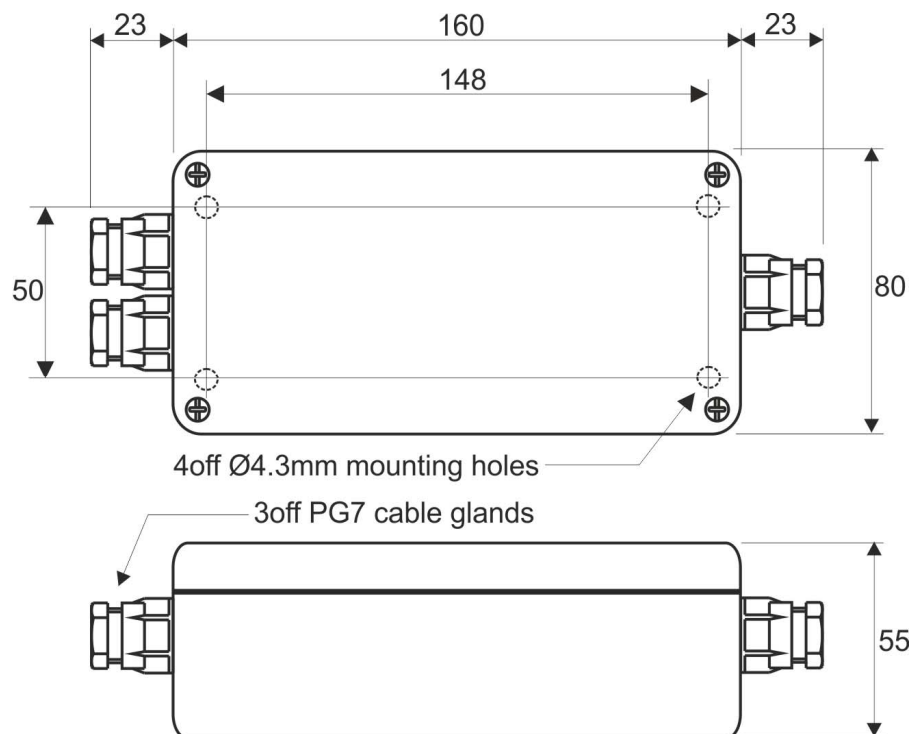
RS485	CAN	RS232
+V	CAN+	+V
A	CAN H	Tx
CH	CAN SH	CH
B	CAN L	Rx
-V	CAN GND	GND and -V

J3 Connector Detail

J3 PIN	RS485	CAN	RS232
2	B	CAN L	Tx
3	N/A	N/A	Rx
5	GROUND	GROUND	GROUND
7	A	CAN H	N/A

Mechanical Dimensions

All dimensions in millimeters



Unit 15,
Newport Business Park
Barry Way, Newport,
Isle of Wight,
PO30 5GY
United Kingdom
Tel: +44 (0) 1983 249264
Fax: +44 (0) 1983 249266
sales@lcm systems.com

Due to continual product development, LCM Systems Ltd. reserves the right to alter product specifications without prior notice.

Issue date: 17/11/2011