

Features

- Manufactured by Crosby
- Bow shackles from 0.3te to 400te
- D shackles from 0.5te to 85te
- Quenched and Tempered
- Alloy bolts and bows
- Buy as an accessory with or without our link load cells.
- Supplied with full Crosby traceability.

Typical Applications

- Link load cell accessory
- Lifting and pulling
- Tension test rigs
- Tension stay termination
- Entertainment rigging

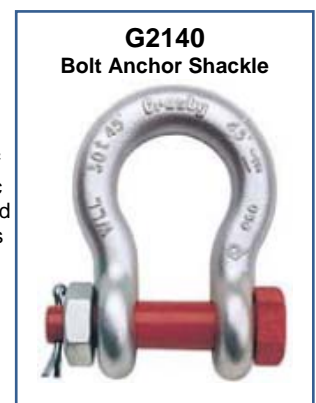
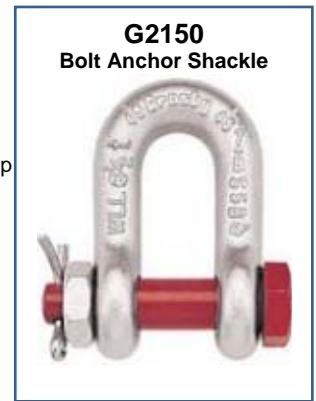
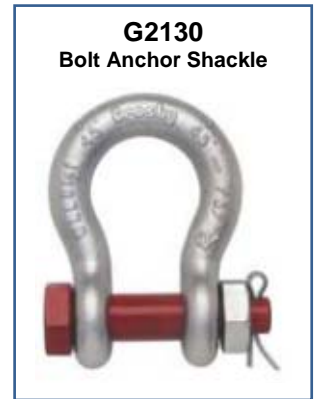
Description

G2130 Bow Shackle & G2150 D Shackle

- Capacities 1/3 thru 150 metric tons, grade 6.
- Working Load Limit and grade "6" permanently shown on every shackle.
- Forged — Quenched and Tempered, with alloy pins.
- Hot Dip galvanized or Self Colored. (85, 120, and 150-metric ton shackles are all hot dip galvanized bows and the bolts are Dimetcoated® and painted red)
- Fatigue rated (1/3t - 55t).
- Shackles 25t and larger are RFID EQUIPPED.
- Approved for use at -40 degree C (-40 degree F) to 204 degree C (400 degree F).
- 2t through 25t bow and bolt are Certified to meet charpy impact testing of 42joules (31 ft-lbs.) min. ave. at -20 degree C (-4 degree F)
- Meets or exceeds all requirements of ASME B30.26.
- Sizes 1/2t-25t meet the performance requirements of EN13889:2003.
- Shackles 55 metric tons and smaller can be furnished proof tested with certificates to designated standards, such as ABS, DNV, Lloyds, or other certification when requested at time of order.
- Shackles 120 metric tons and larger are proof tested, Magnetic Particle Inspected and provided with Serialized Pin and Bow.
- Type Approval and certification in accordance with ABS 2006 Steel Vessel Rules 1-1-17.7, and ABS Guide for Certification of Cranes.
- 3.1 Certification as standard available for charpy and statistical proof test up to 25 tons to DNV2.7-1 and EN13889.
- Crosby 2t through 25t G2130 anchor shackles are type approved to DNV Certification
- Notes 2.7-1- Offshore Containers. These Crosby shackles are statistical proof and impact tested. The tests are conducted by Crosby and 3.1 test certification is available upon request..
- All other 2130 and all 2150 shackles can meet charpy requirements of 42 joules (31 ft-Lbs) avg at -20 degree C (-4 degree F) upon special request.
- Look for the Red Pin® . . . the mark of genuine Crosby quality.

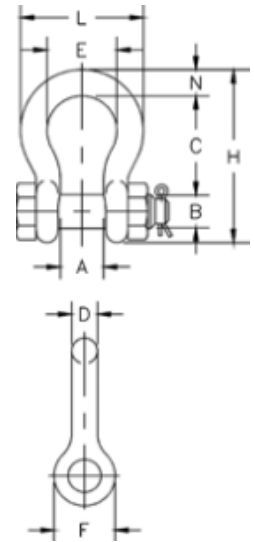
G2140 Bow Shackle

- Quenched and Tempered.
- Alloy bows, Alloy bolts.
- Forged Alloy Steel 30 thru 175 metric tons. Cast Alloy Steel 200 thru 400 metric tons. Meets performance requirements of Grade 8 shackles.
- Working Load Limit is permanently shown on every shackle.
- 30, 40, 55, and 85 metric ton shackle bows are available galvanized or self colored with pins that are galvanized and painted red. 120, 150, 175 metric ton shackle bows are hot-dip galvanized; pins are Dimetcoated® and painted red. 200, 250, 300 and 400 metric ton shackle bows are Dimetcoated®; pins are Dimetcoated® and painted red.
- All sizes are RFID EQUIPPED.
- Approved for use at -40 degree C (-40 degree F) to 204 degree C (400 degree F).
- Shackles are Quenched and Tempered and can meet DNV impact requirements of 42 joules (31 ft-lbs.) at -20 degree C (-4 degree F).
- All sizes are individually proof tested to 2.0 times the Working Load Limit.
 - Shackles 200 metric tons and larger are provided as follows.
 - Serialized Pin and Bow
 - Material Certification (Chemical)
 - Magnetic Particle Inspected.
 - Certification must be requested at time of order.
- Meets or exceeds all requirements of ASME B30.26 including identification, ductility, design factor, proof load and temperature requirements. Importantly, these shackles meet other critical performance requirements including fatigue life, impact properties and material traceability, not addressed by ASME B30.26.
- Type Approval and certification in accordance with ABS 2006 Steel Vessel Rules 1-1-17.7, and ABS Guide for Certification of Cranes.
- Look for the Red Pin® . . . the mark of genuine Crosby quality.



G2130 Bow Shackle

Nominal Size (in.)	Working Load Limit (t)*	G-2130 Crosby Stock Code	Weight Each (kg)	Dimensions (mm)										Tolerance ±	
				A	B	C	D	E	F	H	L	N	C	A	
3/16	1/3 ‡	1019464	.03	9.65	6.35	22.4	4.85	15.2	14.2	37.3	24.9	4.85	1.50	1.50	
1/4	1/2	1019466	.05	11.9	7.85	28.7	6.35	19.8	15.5	46.7	32.5	6.35	1.50	1.50	
5/16	3/4	1019468	.10	13.5	9.65	31.0	7.85	21.3	19.1	53.0	37.3	7.85	3.30	1.50	
3/8	1	1019470	.15	16.8	11.2	36.6	9.65	26.2	23.1	63.0	45.2	9.65	3.30	1.50	
7/16	1-1/2	1019471	.22	19.1	12.7	42.9	11.2	29.5	26.9	74.0	51.5	11.2	3.30	1.50	
1/2	2	1019472	.36	20.6	16.0	47.8	12.7	33.3	30.2	83.5	58.5	12.7	3.30	1.50	
5/8	3-1/4	1019490	.62	26.9	19.1	60.5	16.0	42.9	38.1	106	74.5	17.5	6.35	1.50	
3/4	4-3/4	1019515	1.23	31.8	22.4	71.5	19.1	51.0	46.0	126	89.0	20.6	6.35	1.50	
7/8	6-1/2	1019533	1.79	36.6	25.4	84.0	22.4	58.0	53.0	148	102	24.6	6.35	1.50	
1	8-1/2	1019551	2.28	42.9	28.7	95.5	25.4	68.5	60.5	167	119	26.9	6.35	1.50	
1-1/8	9-1/2	1019579	3.75	46.0	31.8	108	28.7	74.0	68.5	190	131	31.8	6.35	1.50	
1-1/4	12	1019597	5.31	51.5	35.1	119	31.8	82.5	76.0	210	146	35.1	6.35	1.50	
1-3/8	13-1/2	1019613	7.18	57.0	38.1	133	35.1	92.0	84.0	233	162	38.1	6.35	3.30	
1-1/2	17	1019613	8.62	60.5	41.4	146	38.1	98.5	92.0	254	175	41.4	6.35	3.30	
1-3/4	25	1019659	15.4	73.0	51.0	178	44.5	127	106	313	225	57.0	6.35	3.30	
2	35	1019677	23.7	82.5	57.0	197	51.0	146	122	348	253	61.0	6.35	3.30	
2-1/2	55	1019695	44.6	105	70.0	267	66.5	184	145	453	327	79.5	6.35	6.35	
3	† 85	1019711	70	127	82.5	330	76.0	200	165	546	365	92.0	6.35	6.35	
3-1/2	† 120 ‡	1019739	120	133	95.5	372	92.0	229	203	626	419	105	6.35	6.35	
4	† 150 ‡	1019757	153	140	108	368	104	254	229	653	468	116	6.35	6.35	

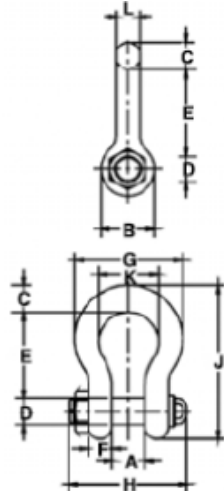


* NOTE: Maximum Proof Load is 2.0 times the Working Load Limit. Minimum Ultimate Strength is 6 times the Working Load Limit.

† Individually Proof Tested with certification.

‡ Furnished in Anchor style only and furnished with Round Head Bolts with welded handles.

G2140 Bow Shackle



Nominal Size (in.)	Working Load Limit (t)*	G-2140 Crosby Stock Code	Weight Each (kg)	Dimensions (mm)														Tolerance ±	
				A	B	C	D	E	F	G	H	J	K	L	A	E			
1-1/2	30	1021110	8.52	60.5	91.9	41.1	41.4	146	35.3	175	196	254	98.6	38.9	3.3	6.4			
1-3/4	40	1021138	15.4	73.2	106	57.2	50.8	178	44.5	224	237	313	127	46.7	3.3	6.4			
2	55	1021156	23.6	82.6	122	61.0	57.2	197	50.8	258	264	347	146	52.8	3.3	6.4			
2-1/2	85	1021174	43.5	105	148	79.2	69.9	267	66.5	324	345	455	184	68.8	6.4	6.4			
3	120	1021192	81	127	165	92.2	82.6	330	76.2	371	384	546	200	79.2	6.4	6.4			
3-1/2	† 150	1021218	120	133	203	111	95.3	372	95.3	432	448	632	229	91.9	6.4	6.4			
4	† 175	1021236	153	140	229	116	108	368	102	457	517	652	254	102	6.4	6.4			
4-3/4**	† 200	1021414	204	184	267	152	121	397	95.3	533	539	743	279	114	6.4	6.4			
5**	† 250	1021432	272	216	305	165	127	508	98.6	622	576	889	330	114	6.4	6.4			
6**	† 300	1021450	352	213	305	171	152	495	129	635	637	895	330	127	6.4	6.4			
7**	† 400	1021478	500	210	356	184	178	572	165	660	728	1022	330	152	6.4	6.4			

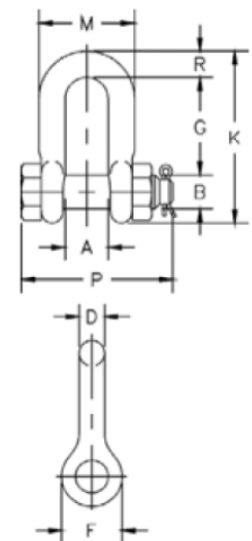
* NOTE: Maximum Proof Load is 2.0 times the Working Load Limit. Minimum Ultimate Load is 4 times the Working Load Limit on 200 thru 400 metric tons. For sizes 30 thru 175 metric tons, Minimum Ultimate Load is 5.4 times the Working Load Limit.

** Cast Alloy Steel.

† Furnished with Round Head Bolts with an eyebolt for handling

G2150 D Shackle

Nominal Size (in.)	Working Load Limit (t)*	G-2150 Crosby Stock Code	Weight Each (kg)	Dimensions (mm)										Tolerance ±	
				A	B	D	F	G	K	M	P	R	G	A	
1/4	1/2	1019768	.06	11.9	7.85	6.35	15.5	19.1	40.4	24.6	39.6	6.35	1.50	1.50	
5/16	3/4	1019770	.10	13.5	9.65	7.85	19.1	25.4	48.5	29.5	46.2	7.85	1.50	1.50	
3/8	1	1019772	.15	16.8	11.2	9.65	23.1	31.0	58.5	35.8	55.0	9.65	3.30	1.50	
7/16	1-1/2	1019774	.22	19.1	12.7	11.2	26.9	36.1	67.5	41.1	63.5	11.2	3.30	1.50	
1/2	2	1019775	.34	20.6	16.0	12.7	30.2	41.4	77.0	46.0	71.0	12.7	3.30	1.50	
5/8	3-1/4	1019793	.67	26.9	19.1	16.0	38.1	51.0	95.5	58.5	89.5	16.0	3.30	1.50	
3/4	4-3/4	1019819	1.14	31.8	22.4	19.1	46.0	60.5	115	70.0	103	20.6	6.35	1.50	
7/8	6-1/2	1019837	1.74	36.6	25.4	22.4	53.0	71.5	135	81.0	120	24.6	6.35	1.50	
1	8-1/2	1019855	2.52	42.9	28.7	25.4	60.5	81.0	151	93.5	135	25.4	6.35	1.50	
1-1/8	9-1/2	1019873	3.45	46.0	31.8	28.7	68.5	91.0	172	103	150	31.8	6.35	1.50	
1-1/4	12	1019891	4.90	51.5	35.1	31.8	76.0	100	191	115	165	35.1	6.35	1.50	
1-3/8	13-1/2	1019917	6.24	57.0	38.1	35.1	84.0	111	210	127	183	38.1	6.35	3.30	
1-1/2	17	1019935	8.39	60.5	41.4	38.1	92.0	122	230	137	196	41.4	6.35	3.30	
1-3/4	25	1019953	14.2	73.0	51.0	44.5	106	146	279	162	230	54.0	6.35	3.30	
2	35	1019971	21.2	82.5	57.0	51.0	122	172	312	184	264	60.0	6.35	3.30	
2-1/2	55	1019999	38.6	105	70.0	66.5	145	203	377	238	344	66.5	6.35	6.35	
3	† 85	1020013	56	127	82.5	76.0	165	216	429	279	419	89.0	6.35	6.35	



* NOTE: Maximum Proof Load is 2.0 times the Working Load Limit. Minimum Ultimate Strength is 6 times the Working Load Limit.

† Individually Proof Tested with certification.

‡ Furnished in Anchor style only and furnished with Round Head Bolts with welded handles.

Unit 15,
Newport Business Park
Barry Way, Newport,
Isle of Wight,
PO30 5GY
United Kingdom
Tel: +44 (0) 1983 249264
Fax: +44 (0) 1983 249266
sales@lcmsystems.com

Due to continual product development, LCM Systems Ltd. reserves the right to alter product specifications without prior notice.

Issue date: 29/08/2012