

# LCM Systems Ltd

A brief overview of LCM Systems company history, our strengths, facilities and where we are heading in the future.



[www.lcmsystems.com](http://www.lcmsystems.com)

# LCM Systems History

- Company founded in 1984 to manufacture load cells and instrumentation for performance racing yachts.
- The company was sold to the current owners (Steve Sargeant & David Willmington) at the end of 2001.
- The company focused growth into other markets, which we are still servicing today, including; oil & gas, civil engineering, marine & offshore, aerospace, heavy lifting and process engineering.
- Our turnover has grown from £500k (€600k) year end 2001 to £2.4m (€3.12m) year end 2015.



[www.lcmsystems.com](http://www.lcmsystems.com)

# LCM Systems Company Strengths

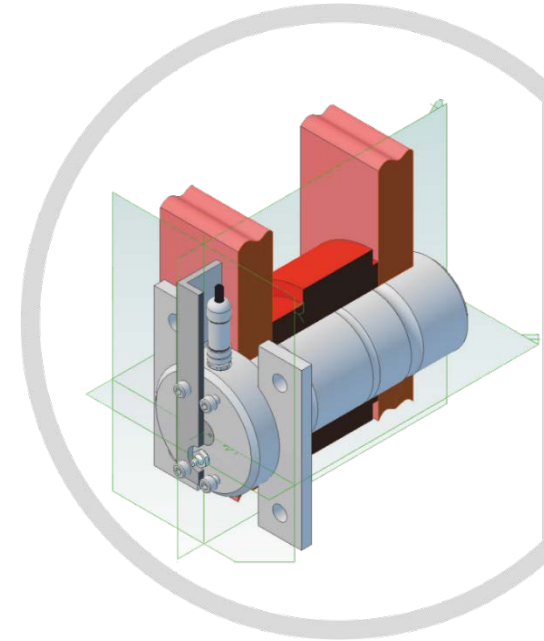
- Single UK facility handling marketing, sales, design, manufacturing, finance and final test/calibration.
- High level of market and application experience, offering expert advice in the selection of the most suitable commercial/technical product solution.
- The company is still privately owned, providing us with true control in our future and with excellent financial stability.
- The ability to adapt to meet growing customer demand and technical requirements, offering our customers true commercial advantages.



[www.lcmsystems.com](http://www.lcmsystems.com)

# LCM Systems Product Strengths

- We design/manufacture standard and custom products.
- 99% of all load cells of stainless steel construction.
- Products available with high degree of environmental sealing and provide excellent long term reliability.
- Custom design products available on shorter lead time than most of our competitors.
- All products can be adapted to meet specific application and technical needs.



[www.lcmsystems.com](http://www.lcmsystems.com)

# LCM Systems Facilities

- ⦿ Material stock holding
- ⦿ In house machine shop
- ⦿ 3D CAD design
- ⦿ Strain Gauging laboratory
- ⦿ Instrumentation build/assembly
- ⦿ Compression calibration to 1500 tonne
- ⦿ Tension calibration to 150 tonne
- ⦿ Pressure testing to 1000 psi
- ⦿ Pressure calibration to 4000 bar
- ⦿ Fully documented QMS

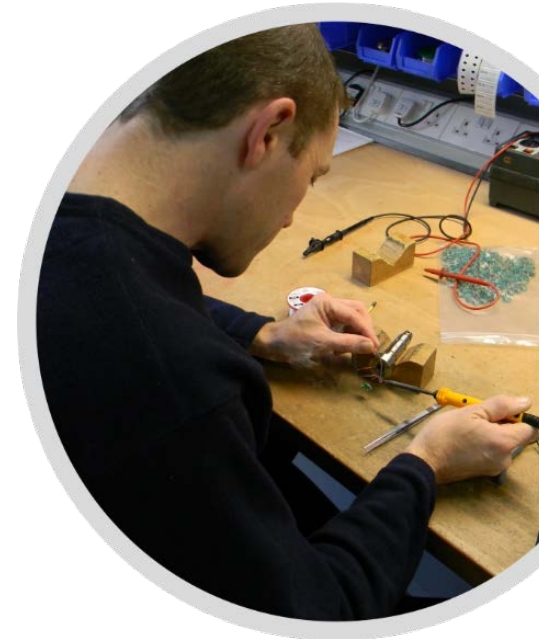


[www.lcmsystems.com](http://www.lcmsystems.com)



# LCM Systems Capabilities

- Custom product design
- Prototype product design
- Batch manufacturing
- Packaged system designs
- Short lead times
- Down hole strain gauging
- In-house machining, fabrication and welding
- Software development
- In-house calibration
- Fast turnaround time for quotations



[www.lcmsystems.com](http://www.lcmsystems.com)

# LCM Systems – Product Examples



Load Pin



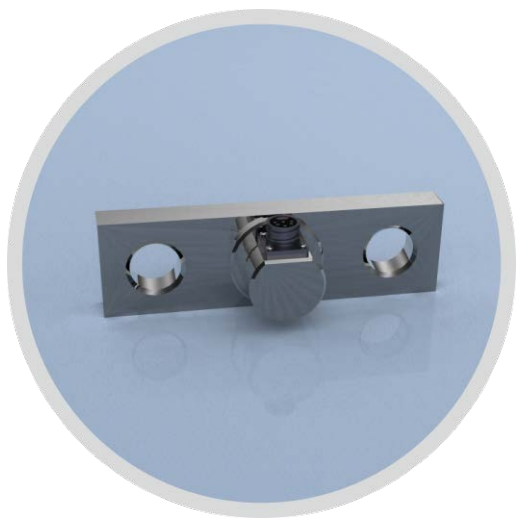
Load Shackle



Compression Load Cell

[www.lcmsystems.com](http://www.lcmsystems.com)

# LCM Systems – Product Examples



Load Link



Tension & Compression  
Load Cell



Tension Load Cell

[www.lcmsystems.com](http://www.lcmsystems.com)



# LCM Systems – Product Examples



Load Beam



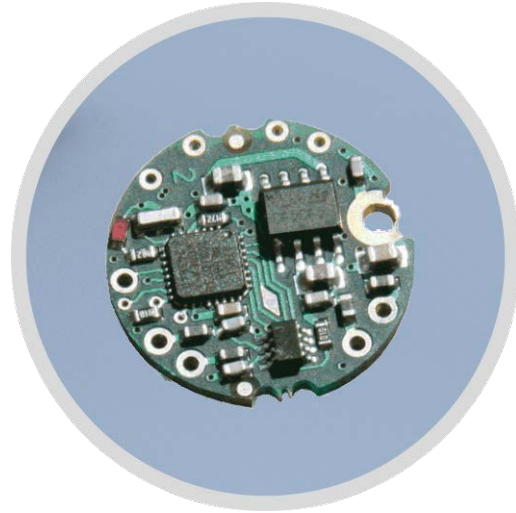
Pressure Transducer



Linear Displacement

[www.lcmsystems.com](http://www.lcmsystems.com)

# LCM Systems – Load Cell Accessories Examples



Integral Amplifier

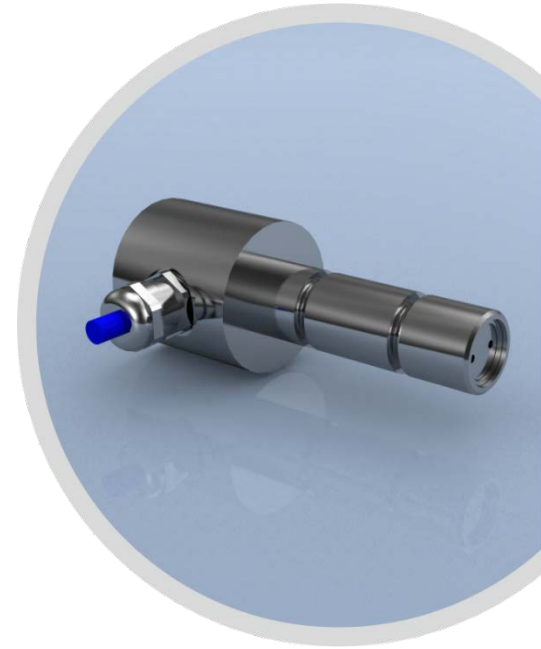


Display

[www.lcmsystems.com](http://www.lcmsystems.com)

# LCM Systems – Future Plans

- ⦿ Introduction of ATEX and IECx Load Cell & Load Pin range
- ⦿ Expansion of high capacity load cell range
- ⦿ Packaged simple system introduction, including panel building etc.
- ⦿ Centre of Gravity software solution using cable connected and wireless technology
- ⦿ Hardware and software based data logging solutions
- ⦿ Expansion of subsea, underwater load cell and instrumentation range



[www.lcmsystems.com](http://www.lcmsystems.com)



*Any questions?*

[www.lcmsystems.com](http://www.lcmsystems.com)