

# SBL-AV Shear Beam Anti-Vibration Mounting Assembly

TYPE: SBL-AV

## Features

- Minimise vibration effects
- Plated steel for maximum protection
- Suitable for SBL-1, SBL-2 & SBL-3 load cells (Capacities ≤2000kg)
- Simple Installation

## Typical Applications

- Conveyor Weighing
- Mixer Batching Plants
- Rotating machinery Weighing

Unit 15,  
Newport Business Park  
Barry Way, Newport,  
Isle of Wight,  
PO30 5GY  
United Kingdom  
Tel: +44 (0) 1983 249264  
Fax: +44 (0) 1983 249266  
sales@lcm systems.com

Due to continual product development, LCM Systems Ltd. reserves the right to alter product specifications without prior notice.

Issue date: 17/11/2011

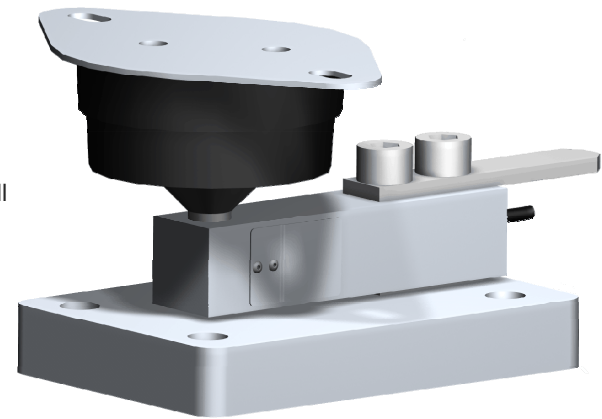
## Description

The SBL-AV anti-vibration mounting assembly has been designed to assist with the damping of high frequency vibrations, which may be present in some weighing applications.

The SBL-AV helps “damp” these high frequency oscillations to help improve overall system accuracy and settling times.

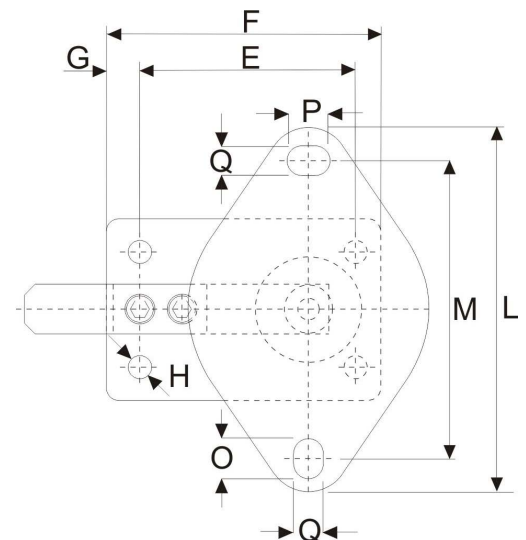
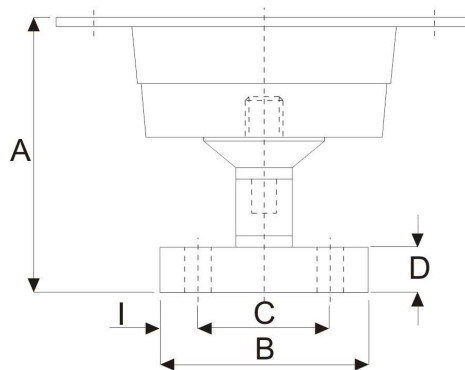
The SBL-AV can be supplied as an accessory for use with the SBL-1, SBL-2 or SBL-3 series of shear beam load cells.

Please contact LCM Systems technical department to discuss any assistance you may need with the specification of the correct load cell and mounting arrangement for your application.



## Mechanical Dimensions

All dimensions in millimeters



Range	A	B	C	D	E	F	G	Flange Thickness
250kg to 2000kg	146	110	70	24	130	165	20	5
	H	I	L	M	O	P	Q	
	14.0	20	220	180	24	26	18	