

SPB-1 Aluminium Low Range Single Point Load Cell

Features

- Ranges 2, 3, 5, 7, 10, 15kg
- Anodised aluminium construction
- Environmentally sealed to IP65 (IP67 can also be offered)
- High accuracy
- Suitable for use in platforms, maximum size 350mm x 350mm
- Integral mechanical overload stops included as standard

Typical Applications

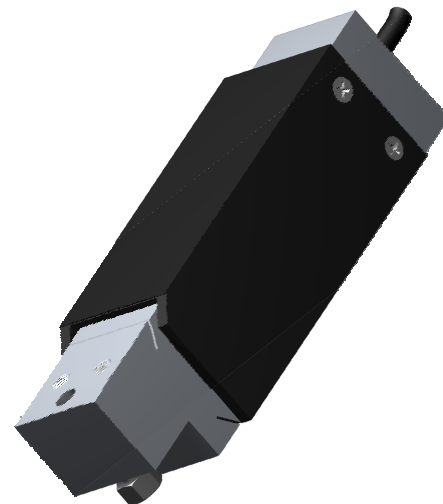
- Platform weighing
- High accuracy force measurement
- Web tension measurement

Description

The SPB-1 is a low range anodised aluminium alloy single point load cell, which has been specifically designed for platform weighing applications, although it is equally suited to other weighing and force measurement applications where high accuracy is required from a low range product.

The SPB-1 is suitable for use in platforms with sizes up to 350mm x 350mm, which in combination with its low selling price makes it highly attractive for a number of weighing applications. It is environmentally sealed as standard to IP65, with an option to upgrade the sealing to IP67.

The SPB-1 series can be supplied on its own or combined with our extensive range of instrumentation to provide a complete load monitoring system.

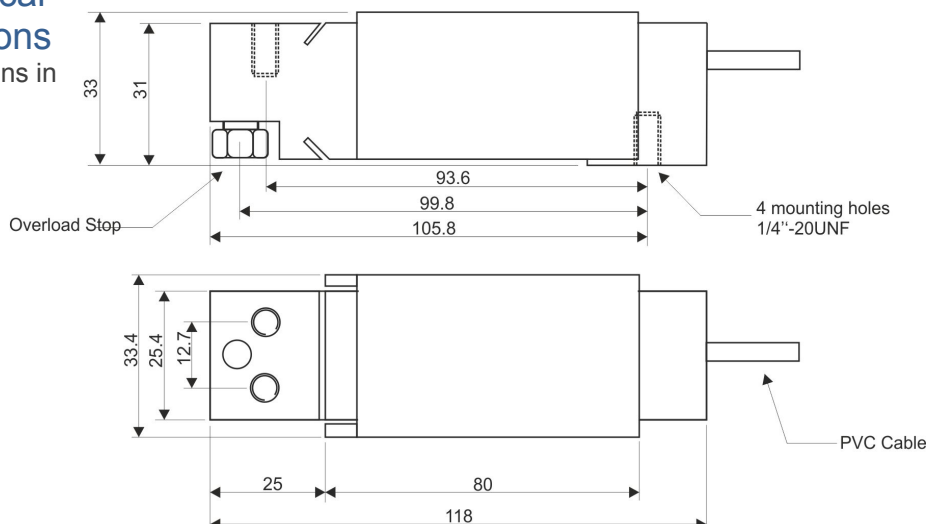


Specification

Rated Load (kg):	2, 3, 5, 7, 10, 15		
Proof Load:	150% of Rated Load		
Ultimate Breaking Load:	300% of Rated Load		
Output:	2.0 mV/V at Rated Load ($\pm 10\%$)		
Accuracy:	$< \pm 0.02\%$ of Rated Load (typically)		
Non-Repeatability:	$< \pm 0.01\%$ of Rated Load		
Excitation Voltage:	10vdc recommended, 15vdc maximum		
Bridge Resistance:	415 Ω		
Insulation Resistance:	$> 500M\Omega$ @ 100vdc		
Operating Temperature Range:	-20 to +70°C		
Compensated Temperature Range:	-10 to +40°C		
Zero Temperature Coefficient:	$< \pm 0.01\%$ of Rated Load/°C		
Span Temperature Coefficient:	$< \pm 0.003\%$ of Rated Load/°C		
Environmental Protection Level:	IP65 (IP67 optional)		
Connection Type:	PVC screened cable 1m long		
Wiring Connections:	Green +ve supply	Black -ve supply	
	Blue +ve sense	Brown -ve sense	
	Red +ve signal	White -ve signal	
Options Available	Can be supplied with instrumentation Sealing to IP67		

Mechanical Dimensions

All dimensions in millimeters



Unit 15,
Newport Business Park
Barry Way, Newport,
Isle of Wight,
PO30 5GY
United Kingdom
Tel: +44 (0) 1983 249264
Fax: +44 (0) 1983 249266
sales@lcmssystems.com

Due to continual product development, LCM Systems Ltd. reserves the right to alter product specifications without prior notice.

Issue date: 17/11/2011