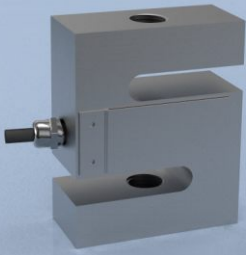


## TYPE: STA-4



# STA-4 Alloy Steel S Type Tension & Compression Load Cell

## Description

The STA-4 load cell series is ideal for measuring both tensile and compressive forces. The standard metric threads at each end of the load cell are designed to accept standard spherical seating rod-end bearings.

The STA-4 is suitable for many applications where a tension and compression load cell is required for high accuracy measurements. Applications such as vessel weighing, material test machines and dynamometers are a few examples. This range of products is also ideally suited for many other OEM load measurement projects, offering a highly cost effective solution for a wide variety of industrial applications.

The STA-4 series can be supplied on its own or combined with our extensive range of instrumentation to provide a complete load monitoring system.

## Features

- Ranges: 1500, 2000, 3000, 5000kg
- Alloy steel nickel plated construction
- Environmentally sealed to IP67
- Can be supplied complete with mating spherical rod-end bearings

## Specification

Rated load (kg)	1500, 2000, 3000, 5000	
Proof load	150% of rated load	
Ultimate breaking load	>300% of rated load	
Output	2mV/V at rated load ( $\pm 0.002\text{mV/V}$ )	
Accuracy	$< \pm 0.02\%$ of rated load	
Non-repeatability	$< \pm 0.01\%$ of rated load	
Excitation voltage	10vdc recommended, 15vdc maximum	
Bridge resistance	350 $\Omega$	
Insulation resistance	>2000M $\Omega$ at 100vdc	
Operating temperature range	-20 to +70°C	
Compensated temperature range	-10 to +40°C	
Zero temperature coefficient	$< \pm 0.004\%$ of rated load/°C	
Span temperature coefficient	$< \pm 0.001\%$ of rated load/°C	
Environmental protection level	IP67	
Connection type	5 metre 6 wire PVC screened cable, via gland cable	
Wiring connections	+supply: Blue +signal: Red +sense: Green	-supply: Black -signal: White -sense: Grey

## Typical Applications

- Hanging scales
- Material test machines
- Engine/motor dynamometers
- Process weighing
- General force measurement

## Available Options

- Spherical seating rod end bearings
- Compression load button
- TEDS option (when used with TR150 handheld display)

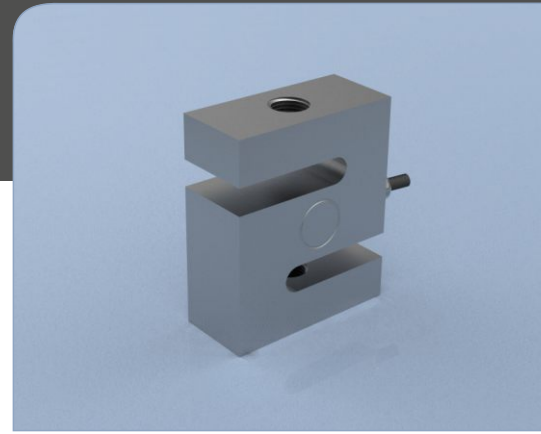
### AVAILABLE TO BUY ONLINE

Visit our website [www.lcmsystems.com](http://www.lcmsystems.com)  
(In-stock items usually ship within 48 hours)

#### LCM Systems Ltd

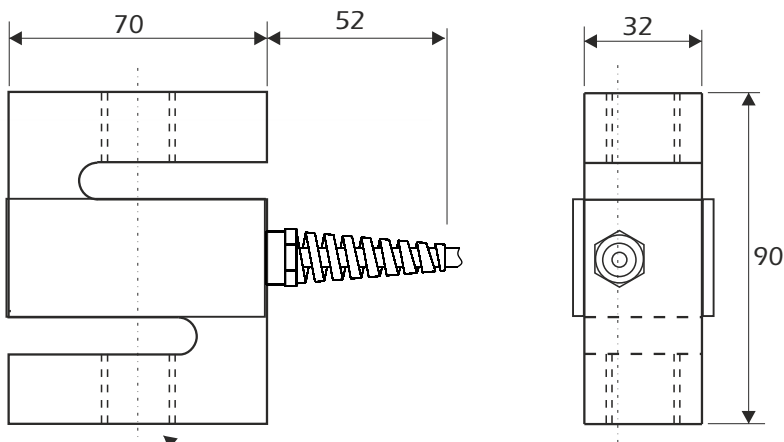
Unit 15, Newport Business Park  
Barry Way, Newport  
Isle of Wight PO30 5GY UK  
Tel: +44 (0)1983 249264  
Fax: +44 (0)1983 249266  
sales@lcmsystems.com  
www.lcmsystems.com

# STA-4 Alloy Steel S Type Tension & Compression Load Cell



## Dimensions

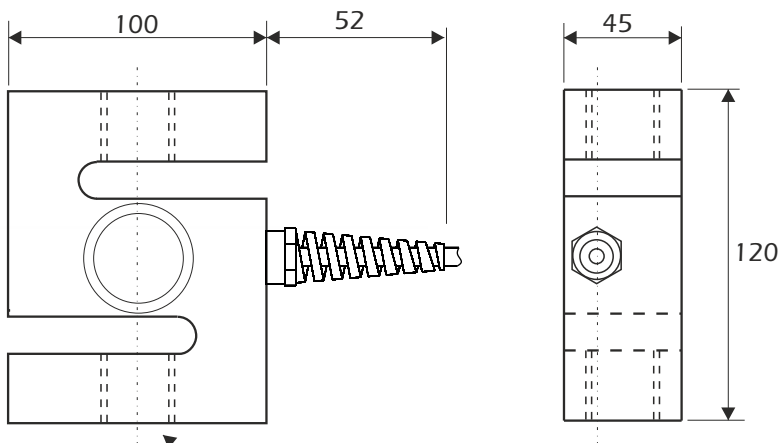
**1500 & 2000kg**



End Threads  
M16 x 2 (both ends)

All dimensions are in mm

**3000 & 5000kg**



End Threads  
M24 x 2 (both ends)

Rating (kgs)	Part Number	Weight (kgs)	Resolution (kgs)
1500	STA-4-1500	1.5	0.1
2000	STA-4-2000	1.5	0.2
3000	STA-4-3000	3.9	0.2
5000	STA-4-5000	3.9	0.5

www.lcmsystems.com

Due to continual product development, LCM Systems Ltd reserves the right to alter product specifications without prior notice.

**Issue No. 1**

Issue date: 05/12/2014

APPROVED

(unapproved if printed)