

CDIT-2 Stainless Steel Low Profile Compression Load Cell

TYPE: CDIT-2

Features

- Ranges 250kg to 100te
- Stainless Steel, fully welded construction
- High Stability
- Low Height
- Environmentally Sealed to IP68

Typical Applications

- Process Measurement & Control
- Automotive Testing
- Low profile weighing systems

Description

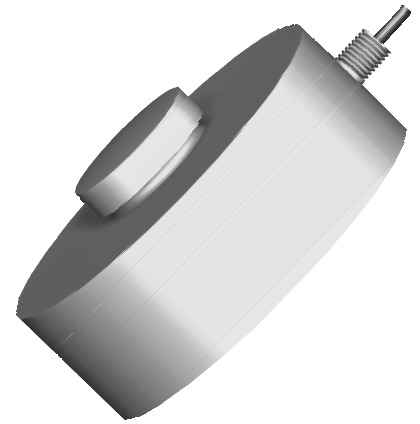
The CDIT-2 series of Load Cells have been designed for a wide range of force measurement and weighing applications where space is limited.

The CDIT-2 is constructed from stainless steel and has a fully welded construction, offering a high level of corrosion resistance for use in harsh environments.

This range of load cells is available with ranges covering 0-250kg to 0-100te.

There are many applications suited to the CDIT-2, including restricted height weighing applications, general force measurements and press calibration.

LCM Systems can provide the CDIT-2 on its own or combined with any of our instrumentation range, to offer a more complete package. Please consult our technical department for any advice required on suitable instrumentation solutions.

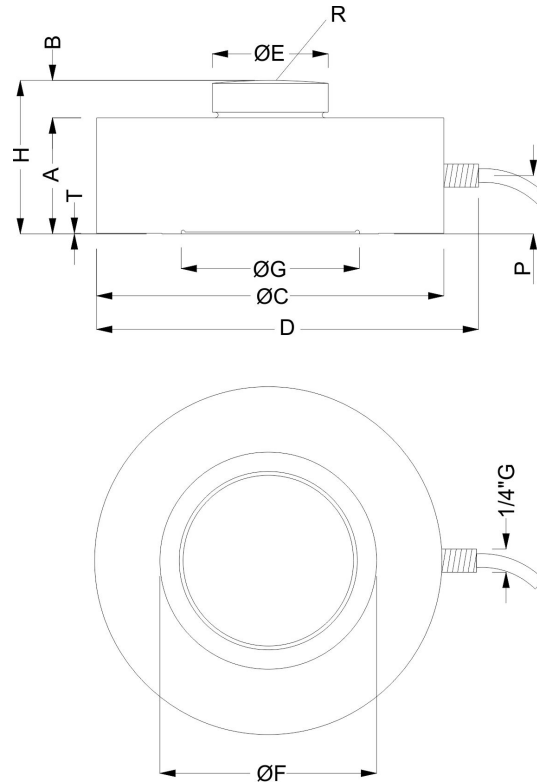


Specification

Rated Load (FSO):	250, 500, 1000, 2500, 5000, 7500kg 10, 15, 20, 30, 50, 75, 100te
Overload Range:	150% FSO
Ultimate Breaking Load:	>300% FSO
Maximum Transverse Load:	50% FSO
Output:	2mV/V ($\pm 0.1\%$)
Zero Balance:	$\leq \pm 1\%$ FSO
Accuracy:	$\leq \pm 0.03\%$ FSO
Non-Repeatability:	$\leq \pm 0.01\%$ FSO
Transverse Load Effect (at 10% FSO):	$\leq \pm 0.03\%$ FSO
Excitation Voltage:	10vdc recommended (18vdc maximum)
Input Resistance:	$700\Omega \pm 3\Omega$
Output Resistance:	$700\Omega \pm 3\Omega$
Insulation Resistance:	>5G Ω @ 50vdc
Compensated Temperature Range:	-10 to +40 °C
Operating Temperature Range:	-20 to +70 °C
Storage Temperature Range:	-20 to +80 °C
Zero Temperature Coefficient:	$\leq \pm 0.005\%$ FSO/°C
Span Temperature Coefficient:	$\leq \pm 0.003\%$ FSO/°C
Environmental Protection Level:	IP68
Weight (load cell only):	250kg to 10te 1.2kg 15te 2.0kg 20te to 30te 3.8kg 50te to 100te 9.4kg

Mechanical Dimensions

All dimensions in millimeters



	RATED LOAD			
	250kg to 10te	15te	20te to 30te	50te to 100te
A	32	35	40	60
B	12	13	14	20
ØC	Ø82	Ø100	Ø126	Ø165
D	93	115	137	180
ØE	Ø22	Ø28	Ø35	Ø60
ØF	Ø60	Ø70	Ø92	Ø115
ØG	Ø52.3	Ø57.3	Ø77.3	Ø92.3
H	44	48	54	80
R	50	65	160	300
T	0.3	0.3	0.5	1
P	14	14	14	28

Unit 15,
Newport Business Park
Barry Way, Newport,
Isle of Wight,
PO30 5GY
United Kingdom
Tel: +44 (0) 1983 249264
Fax: +44 (0) 1983 249266
sales@lcmsystems.com

Due to continual product development, LCM Systems Ltd. reserves the right to alter product specifications without prior notice.

Issue date: 17/11/2011