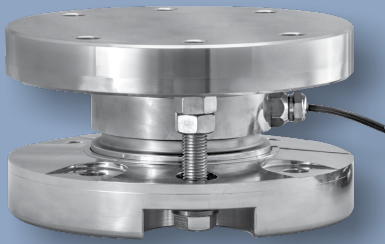


TYPE: CDIT-4-WMOUNT



CDIT-4-WMOUNT Vessel Weighing Assembly

Description

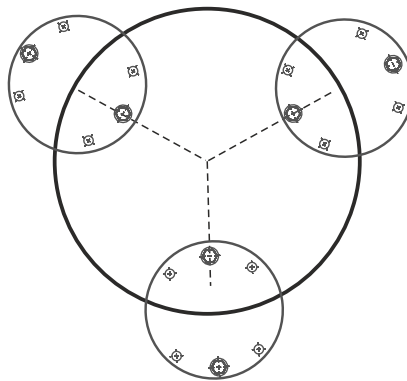
The CDIT-4-WMOUNT is a complete weighing assembly for use with the CDIT-4 range of load cells (see separate data sheet). The weighing assembly facilitates easy mounting for the engineer on site, and incorporates a number of key features that allows the best installed accuracy to be achieved. These include an anti-lift off mechanism, compensation for thermal expansion and for off-axis loading.

Designed for use in food and pharmaceutical applications, the electro-polished, all stainless steel construction and hygienic design is ideally suited for CIP (Clean-in-Place) and SIP (Sterilisation-in-Place) environments

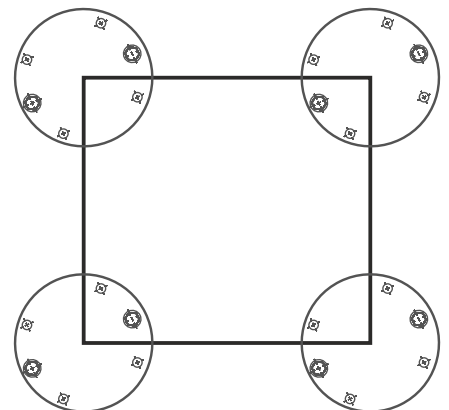
The weigh module provides system integrators with a uniform, compact and economical solution across a wide range of load cell capacities - from 500kg to 30te.

When supplied complete with the CDIT-4 load cell and instrumentation (display/amplifier), they form part of a complete vessel weighing solution.

Installation Examples



Circular system with three supporting points



Square system with four supporting points

Available Options

- Welding fixture
- Stainless steel electro-polished version.

Features

- Capacities from 500kg to 30te
- Low profile design
- Plated alloy steel construction
- Simplifies installation
- Ensures best installation accuracy is achieved
- Especially designed for hopper and tank weighing
- Incorporates a safety retainer to prevent accidental vessel lifting

Typical Applications

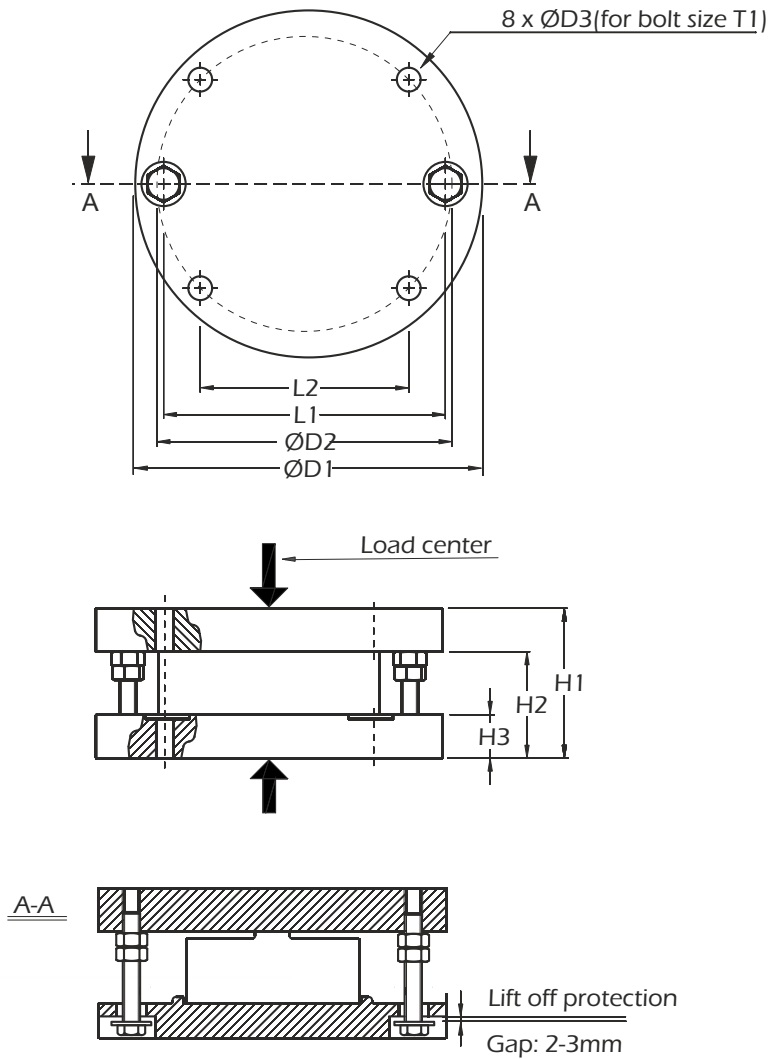
- Vessel weighing
- Silo weighing
- Process weighing & control
- Tank weighing

LCM Systems Ltd

Unit 15, Newport Business Park
Barry Way, Newport
Isle of Wight PO30 5GY UK
Tel: +44 (0)1983 249264
Fax: +44 (0)1983 249266
sales@lcm systems.com
www.lcm systems.com

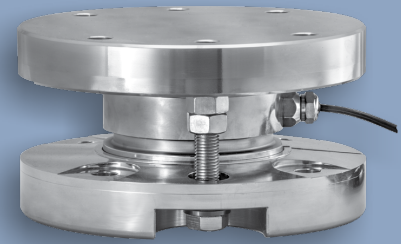
CDIT-4-WMOUNT Weighing Assembly

Dimensions



- ⊙ Mounting bolts are not included
- ⊙ Load carrier and foundation plate to be horizontal (within 0.8/100 for general applications)
- ⊙ External bumper stops are required
- ⊙ Gap approx 2-3mm

Rating	D1	D2	D3	H1	H2	H3	L2	L1	T1	Max lift off force (te)	Weight (kg)
500kg to 5te	160	130	13	80	60	25	130	92	M12	2.5	6.7
10te	188	147	17	102	72	32	146	103	M16	4.5	13.1
20te to 30te	230	185	17	125	92	36	185	132	M16	4.5	21.4



www.lcmsystems.com

Due to continual product development, LCM Systems Ltd reserves the right to alter product specifications without prior notice.

Issue No. 2

Issue date: 15/06/2017

APPROVED

(unapproved if printed)