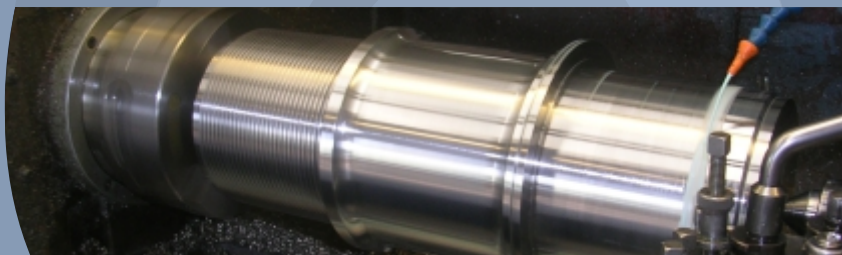
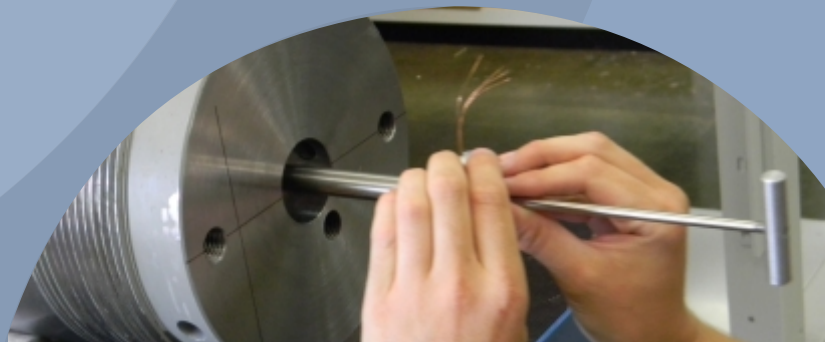


OLCM SYSTEMS

Solutions in Load Cell Technology



Providing tangible benefits through engineering expertise and integrity

About LCM Systems Ltd

LCM Systems Ltd specialises in load measurement solutions that are utilised in many different industries worldwide. Established in 1984 to provide the yachting industry with precision load cells and readout systems, the company has grown rapidly, and now provides engineering and design expertise to market sectors including oil & gas, civil engineering, marine & offshore, aerospace, heavy lifting and process engineering.

We manufacture a comprehensive range of standard load cells and instrumentation, but a significant proportion of our business comes from the supply of bespoke products that are tailored to meet specific customer requirements. We can also manufacture intrinsically safe (Ex i) load cells suitable for Zone 0, 1 and 2 and explosion proof (Ex d) for Zone 1 and 2 hazardous areas. We pride ourselves on being able to provide innovative solutions to complex and challenging load measurement problems.

All products and systems are designed and built at our head office and factory located at purpose built facilities in Newport, Isle of Wight, UK. We do not support a high overhead structure, so we are able offer our customers high quality products at very competitive prices.

Some of the key facilities available at LCM Systems that set us apart from our competition includes:

Engineering

We have developed our own internal systems for load cell design and drawing registration, and all drawings are produced with a 3D modelling package. We can accept drawings from customers in most of the popular and industry standard drawing formats. We also use finite element analysis (FEA) software to prove and validate some of our more complex designs, or where customers have specific commercial requirements for this to be performed.

Production

We operate a full MRP system to load and maintain production demand and scheduling. All our production staff are fully trained and highly experienced in strain gauge application and sensor manufacture.

As a company we specialise in down-hole strain gauging techniques and have honed these skills over the past 40 years, making us one of the most experienced manufacturers using this method in the market. We also operate our own in-house machining facilities, providing us with machining expertise specifically in load cell manufacture. It also allows us to be

self sufficient on many of our orders, providing flexibility and lead times not offered by many of our competitors.

Additionally, we have spent many years developing specialised techniques to ensure consistent high quality is achieved in the most efficient manner, helping to improve production standards and reduce costs.

Calibration

LCM Systems have a wide range of calibration and test facilities in-house. Several purpose built test machines allow calibration in tension to 150te and in compression to 1500te. All test machines are calibrated annually by an independent UKAS certified calibration company at our premises, in accordance with BS EN ISO7500-1:2004 and certified accordingly. All other equipment is also annually calibrated by UKAS certified calibration companies to their relevant standards.

On the rare occasions we cannot calibrate a load cell in-house, we do have access to wider calibration facilities. We also regularly have third party witnessing of customer products being tested and calibrated by all the main classification societies; ABS, Lloyds, BV, and DNV.

Quality

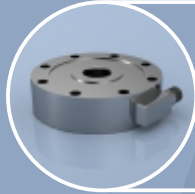
LCM Systems is fully ISO9001 accredited, and we operate an extensively documented QMS system for both safe area and hazardous area products. The quality of our products is second to none and offers superb reliability. This, combined with the excellent traceability we offer, has made us the number one choice of many customers who come back to us year after year.



LCM SYSTEMS
Solutions in Load Cell Technology

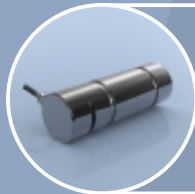
www.lcmsystems.com

Providing tangible benefits through engineering expertise and integrity



Load Cells

With a load cell range that starts with capacities from 25g to 2000 tonnes, we have the expertise to provide you with the right load cell solution for your specific requirements, including the most hostile of environments.



Load Pins

We offer a standard range of load pins, covering ratings between 500kgs and 1500 tonnes, however, the nature of this type of product means that most load pins are manufactured to meet each customers specific dimensional requirements.



Load Shackles

The LCM range of load shackles have been designed for lifting and weighing in rugged or harsh environments. The load shackle pins are manufactured from high tensile carbon steel, and come in capacities from 1 to 1000 tonnes.



Load Links

Manufactured from high tensile aluminium or stainless steel, our load links are simple to install, and matched to standard shackle sizes. They come in ratings from 1 to 500 tonnes and are environmentally sealed to IP65, IP66 or IP67 as required.



Pressure Sensors

Our pressure sensors provide an excellent price/performance ratio and combine the outstanding performance of bonded foil strain gauge technology with a single piece stainless steel diaphragm construction.



Hazardous Area Load Cells

LCM Systems offer a wide range of standard ATEX and IECEx certified load cells, load pins, load shackles, load links, instrumentation and accessories, as well as supplying bespoke products tailored to meet specific customer requirements.



Instrumentation

We supply a wide range of load cell instrumentation products, including digital indicators, hand held indicators, amplifiers and conditioners. This means that for every application, we can provide you with a complete load measurement package.

LCM Systems is an Interface, Inc. company

interface
FORCE MEASUREMENT SOLUTIONS

LCM Systems Ltd

Unit 15, Newport Business Park
Barry Way, Newport
Isle of Wight PO30 5GY UK
Tel: +44 (0)1983 249264
sales@lcmsystems.com
www.lcmsystems.com