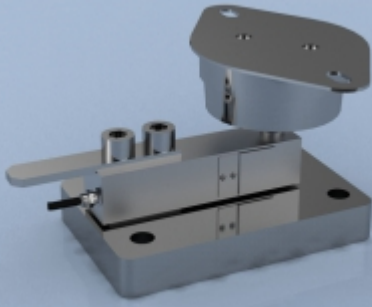


TYPE: SBL-AV



SBL-AV Shear Beam Anti-Vibration Mounting Assembly

Description

The SBL-AV anti-vibration mounting assembly has been designed to assist with the damping of high frequency vibrations, which may be present in some weighing applications. The SBL-AV helps reduce these high frequency oscillations to help improve overall system accuracy and setting times.

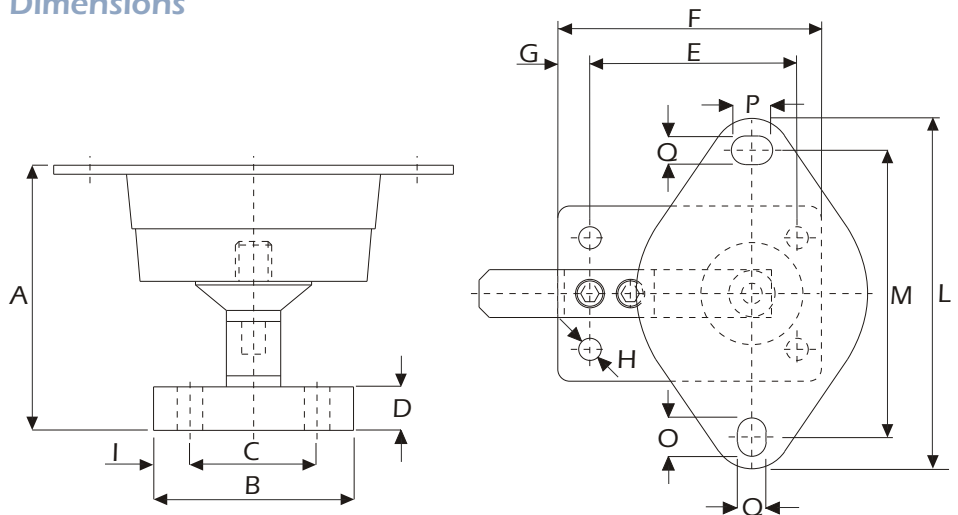
The SBL-AV can be supplied as an accessory for use with the SBL-2 series of shear beam load cells.

Please contact LCM Systems sales team to discuss any assistance you may need with the specification of the correct load cell and mounting arrangement for your application.

Features

- Minimise vibration effects
- Plated steel for maximum protection
- Suitable for the SBL-2 load cell (capacities from 200 to 2000kgs)
- Simple installation

Dimensions



Range (kgs)	A	B	C	D	E	F	G	H	I	L	M	O	P	Q	Flange Thickness
250 - 2000	146	110	70	24	130	165	20	14	20	220	180	24	26	18	5

All dimensions are in mm

Typical Applications

- Conveyor weighing
- Mixer batching plants
- Rotating machinery weighing

LCM Systems Ltd

Unit 15, Newport Business Park
Barry Way, Newport
Isle of Wight PO30 5GY UK
Tel: +44 (0)1983 249264
Fax: +44 (0)1983 249266
sales@lcm systems.com
www.lcm systems.com